



# U2 Collet System



NO.1 U2 COLLET RANGE SIZE 3~16mm

■ L:120 ■ D:28 ■ d:20 ■ G:2.0P  
■ α:17°30' ■ WEIGHT:0.18KGS

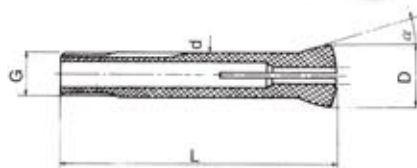
NO.1



ORDER NO.	Q' TY	RANGE SIZE
VE-U2-□	1 PC	NO.1 Ø1, 1.5, 2, 3, 4, 5, 6, 7, 8, 9, 10, 11, 12, 13, 14, 15, 16 NO.2 Ø18, 20, 25MM
VE-U2-□	1 PC	Ø1/8", 3/16", 1/4", 5/16", 3/8", 1/2", 5/8"

NO.2 U2 COLLET RANGE SIZE 18~25mm

NO.2



ORDER NO.	d	CODE NO.
VE-U2-1	1	3207-025
VE-U2-1.5	1.5	3207-026
VE-U2-2	2	3207-027
VE-U2-3	3	3207-001
VE-U2-4	4	3207-002
VE-U2-5	5	3207-003
VE-U2-6	6	3207-004
VE-U2-7	7	3207-005
VE-U2-8	8	3207-006
VE-U2-9	9	3207-007

ORDER NO.	d	CODE NO.
VE-U2-10	10	3207-008
VE-U2-11	11	3207-009
VE-U2-12	12	3207-010
VE-U2-13	13	3207-011
VE-U2-14	14	3207-012
VE-U2-15	15	3207-013
VE-U2-16	16	3207-014
VE-U2-18	18	3207-015
VE-U2-20	20	3207-016
VE-U2-25	25	3207-017

ORDER NO.	d	CODE NO.
VE-U2-1/8	1/8"	3207-018
VE-U2-3/16	3/16"	3207-019
VE-U2-1/4	1/4"	3207-020
VE-U2-5/16	5/16"	3207-021
VE-U2-3/8	3/8"	3207-022
VE-U2-1/2	1/2"	3207-023
VE-U2-5/8	5/8"	3207-024

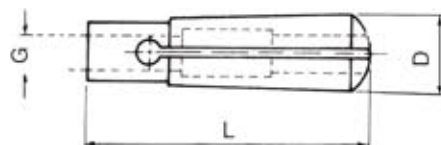


# MT2 Collet System

■ D:18 ■ L:72 ■ G:3/8"-16 WEIGHT:0.12KGS  
■ G:10X1.5P



ORDER NO.	Q' TY	RANGE SIZE
MT2-□	1 PC	Ø4, 6, 8, 10, 12MM
MT2-□	1 PC	Ø1/8", 3/16", 1/4", 3/8", 1/2"



ORDER NO.	d	CODE NO.
MT2-4	4	3208-001
MT2-6	6	3208-002
MT2-8	8	3208-003
MT2-10	10	3208-004
MT2-12	12	3208-005

ORDER NO.	d	CODE NO.
MT2-1/8	1/8"	3208-006
MT2-3/16	3/16"	3208-007
MT2-1/4	1/4"	3208-008
MT2-3/8	3/8"	3208-009
MT2-1/2	1/2"	3208-010

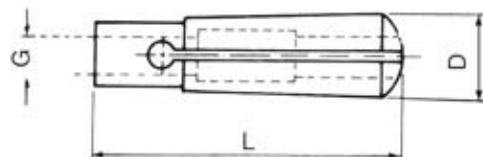


# MT3 Collet System

■ D:24.1 ■ L:87 ■ WEIGHT:0.18KGS  
■ DRAW BAR SIZE: G1.M12X1.75P  
G2.M10X1.5P  
G3.1/2"-12  
G4.3/8"-16



ORDER NO.	Q' TY	RANGE SIZE	DRAW BAR SIZE
MT3-□	1 PC	Ø4, 6, 8, 10, 12, 16, 20MM	G1,G2
MT3-□	1 PC	Ø1/8", 1/4", 3/8", 1/2", 5/8", 3/4"	G3,G4



ORDER NO.	d	CODE NO.
MT3-4	4	3208-100
MT3-6	6	3208-101
MT3-8	8	3208-102
MT3-10	10	3208-103
MT3-12	12	3208-104
MT3-16	16	3208-105
MT3-20	20	3208-106

ORDER NO.	d	CODE NO.
MT3-1/8	1/8"	3208-107
MT3-1/4	1/4"	3208-108
MT3-3/8	3/8"	3208-109
MT3-1/2	1/2"	3208-110
MT3-5/8	5/8"	3208-111
MT3-3/4	3/4"	3208-112