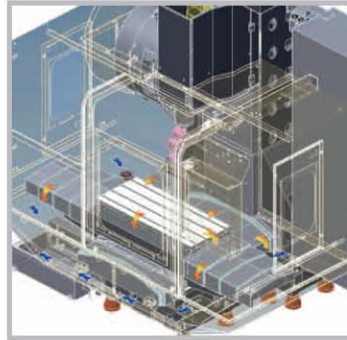
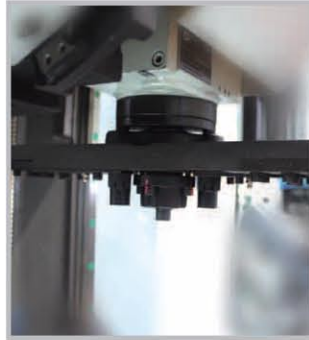


# MACHINING CENTER FOR PARTS

# LCV 500



**LCV 500**

High Speed and High Productivity Compact LM Guide Machining Centers



**Various spindle structure**

- Belt type spindle : car, electric parts
- Direct and built in spindle : high precision semiconductor, aerospace parts, mold machining

## Major Specifications

DESCRIPTION		LCV 500
Travel X/Y/Z	mm	1,050 × 520 × 520
Distance from table top to spindle spindle nose	mm	130-650
Working Surface - table size	mm	1,200 × 510
Loading capacity	kgf	800
Table surface configuration	mm	18H8 T-slot × P125 × 4ea
Spindle Speed (Opt.)	min <sup>-1</sup>	Belt : 8,000 (Direct : 10,000 / 12,000 / 15,000)
Spindle Motor(30min/cont.)	kW	11/15
Max spindle torque	kgf.m	69.6/95.1
Rapid Traverse(X/Y/Z)	m/min	36/36/30
Tool Shank	-	BT40 (BBT40)
Tool Changing Time(T-T)	sec	1.3
Magazine Capacity (Opt.)	ea	24 (30)
Required floor space (L × W × H)	mm	3,025 × 2,430 × 2,732
Machine weight	kgf	6,200
Controller		Fanuc Oi-MD, 31i-B